

INSTALLATION GUIDE

Titan Display and Ethernet Module

Two configurations:

| | | |
|----|--|----|
| 1. | Network Installation..... | 2 |
| | ➔ Send Active Strings using RealTerm..... | 7 |
| 2. | Local Installation (Cross Over cable)..... | 10 |
| 3. | Titan Manager..... | 15 |
| | ➔ Connection..... | 16 |
| | ➔ Settings..... | 17 |
| | ➔ Edit message..... | 18 |
| | ➔ Colour/flashing mode..... | 20 |
| | ➔ Display on Sign..... | 21 |

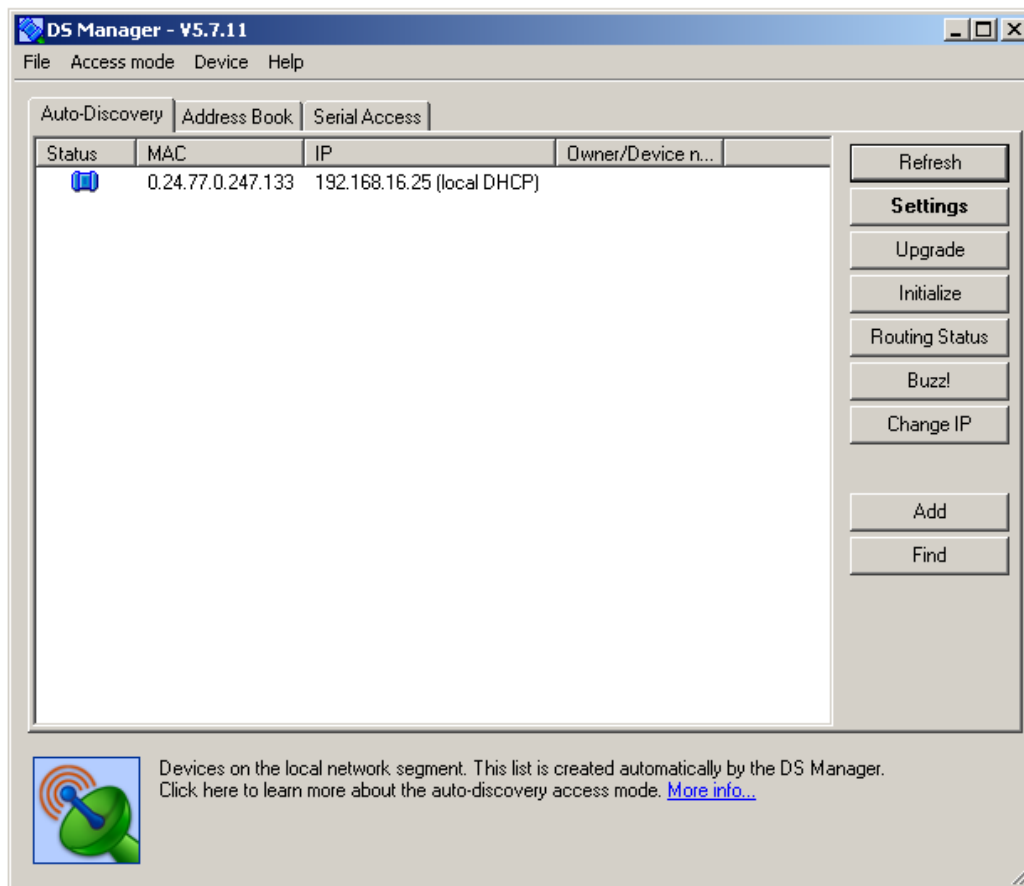
TITAN DISPLAY

➔ Please install Tibbo software first

Network Installation

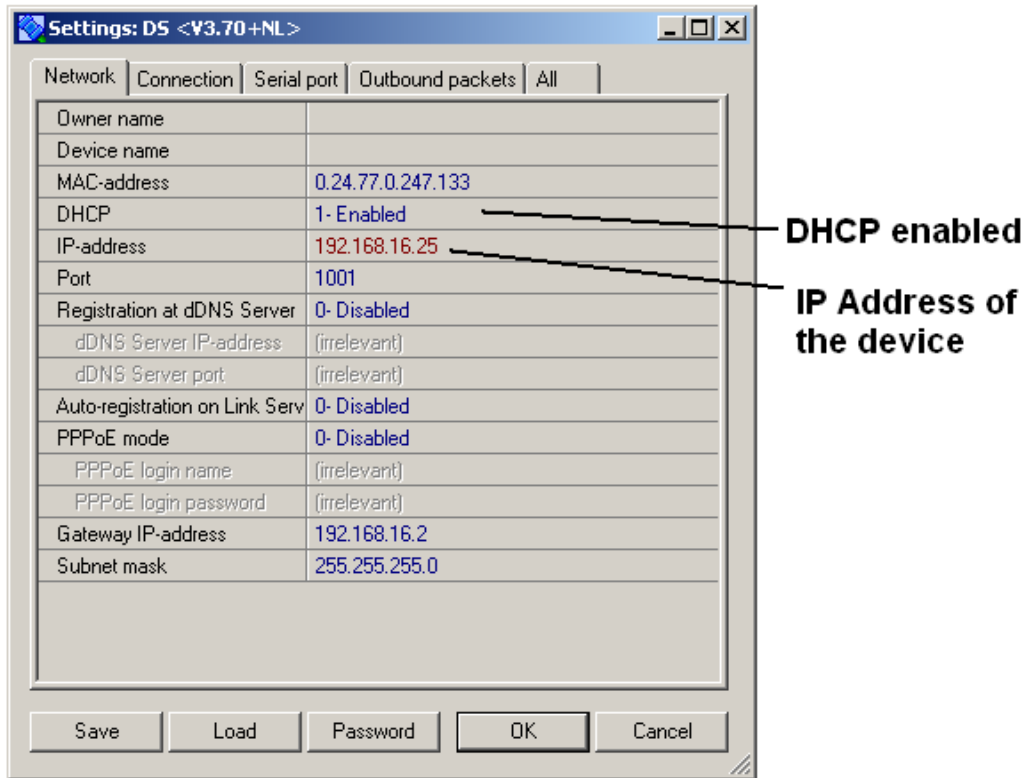
- Connect the Network cable (RJ45) to the Ethernet module
- Launch DS Manager
- Wait a few seconds
- Click Refresh

You should see this screen:



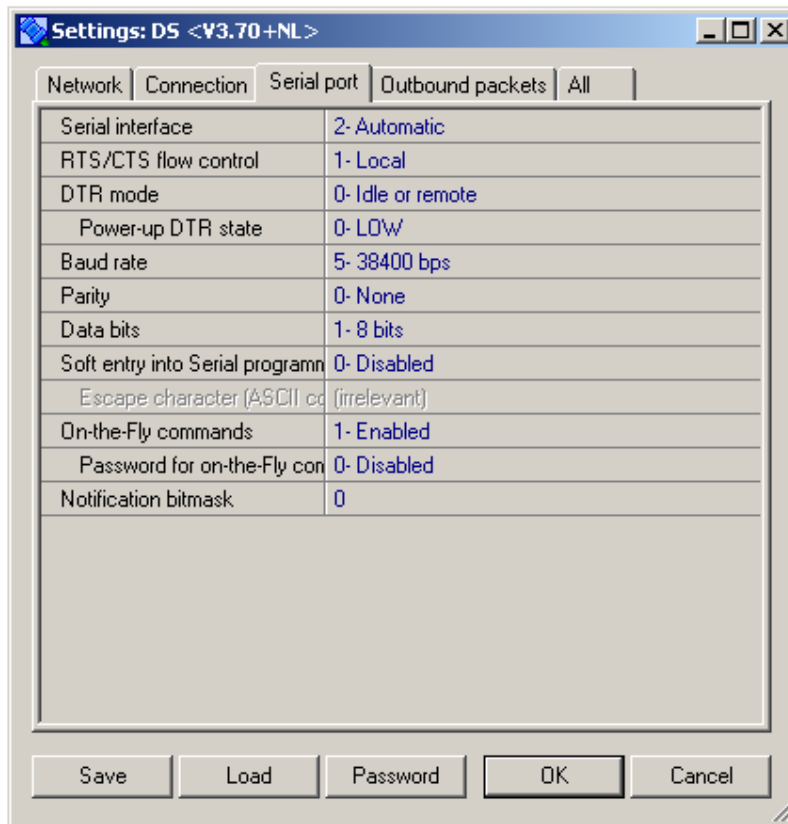
If not, press **Refresh** again.

- Go to the settings



You should see the screen above.

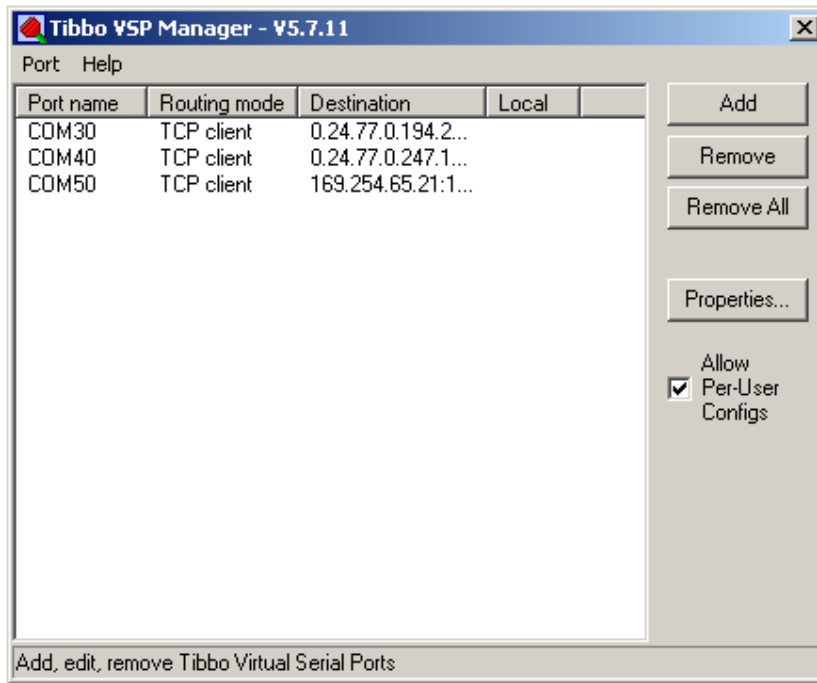
Check the baud rate, it must match the Default Serial Settings on VSP Manager.
VSP Manager will create a Virtual Com port to communicate with the unit(See page 5)
➔ Click on "Serial port" tab, and change it if necessary.



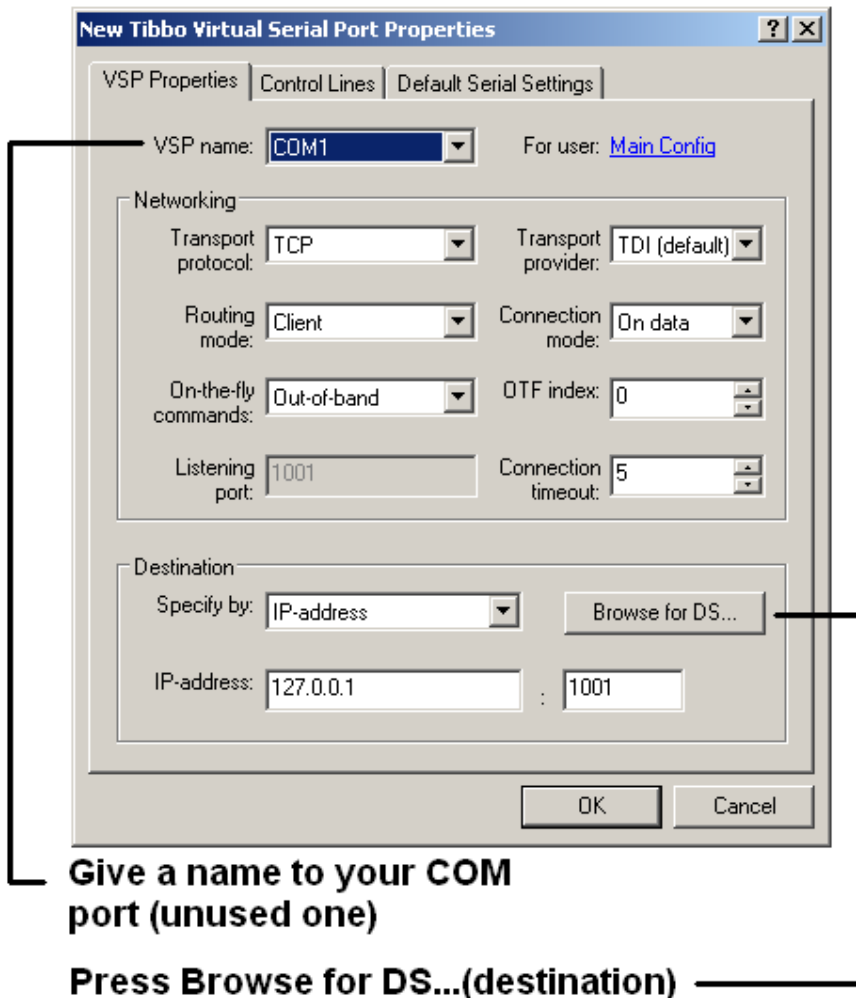
The communication is now ready to be set between the computer and the Ethernet module.

Communication between Computer and Ethernet module

Launch VSP Manager



Press Add to create a new COM port



- Select a COM, for example COM20
- Press Browse for DS
- Select the Device wanted by double clicking on the IP Address

Go to the Default Serial Settings

Select a baud rate matching the one selected on the Settings of DS Manager.

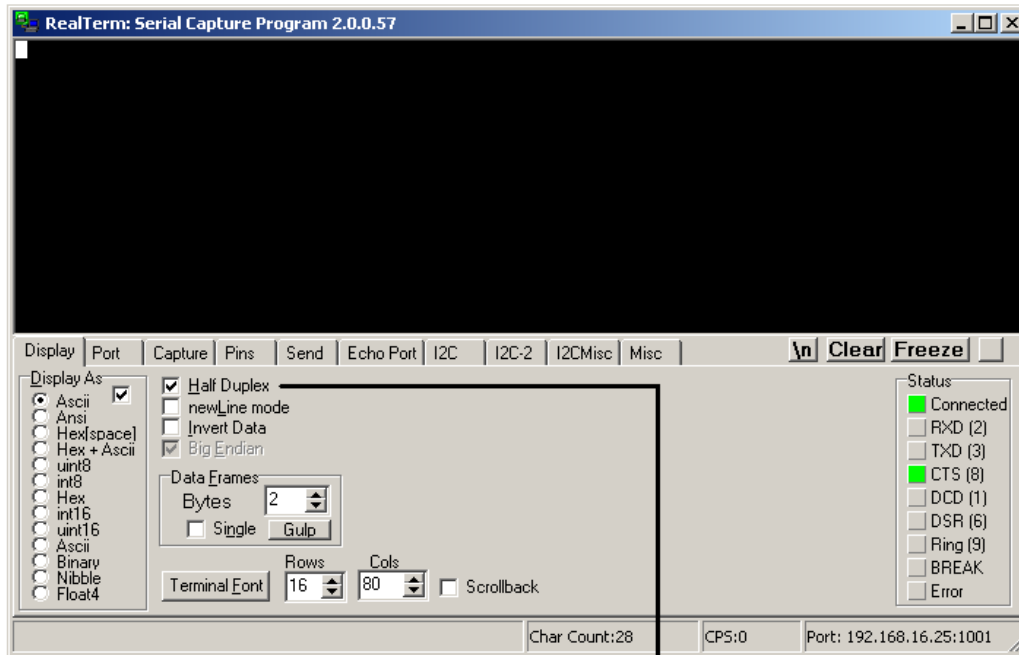
Press OK.

You can use TITAN Manager or any Software that can send ASCII data such as RealTerm, a free application available for download at:
<http://www.london-electronics.com/terminal.php>

See the following pages

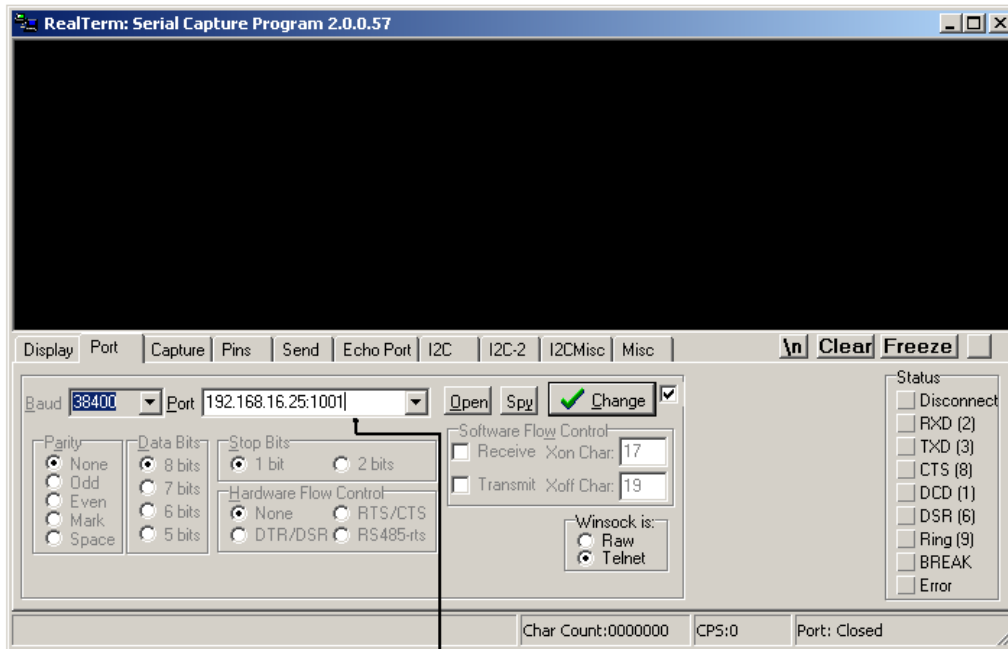
Send Active strings using RealTerm

REALTERM DISPLAY TAB



Tick this case to be able to see the data sent to the display and also the one received back

REALTERM PORT TAB



Enter the IP address and the Port of the device

The IP address of the device is:

- the Ethernet Module by it self
- the Display (Ethernet module will be integrated on the display)
- press Open and click on Change

REALTERM SEND TAB

Data sent:
`\x02F9019900038100000011TEST\x03`

Press "Send ASCII" to send the data

GREEN represents the data sent
YELLOW represents the data received

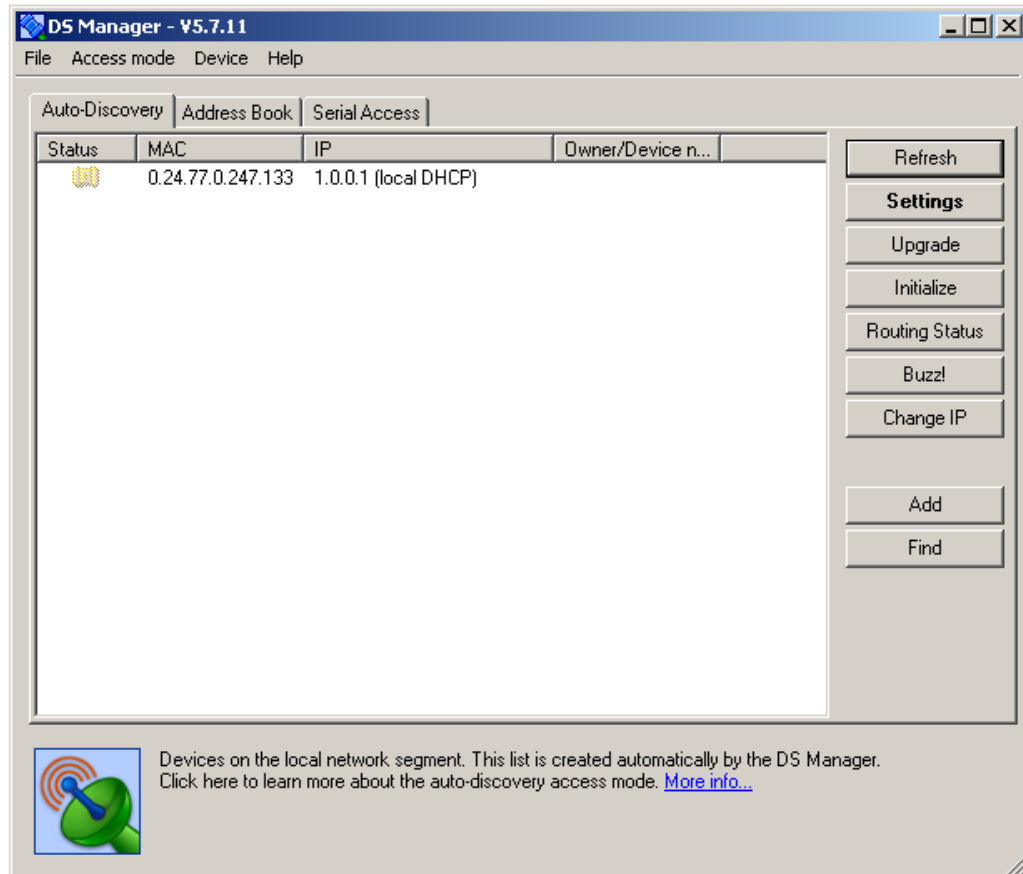
Note that `\x` prefixes any value which needs to be sent as a Hex value.
So `\x02` is Hex 02 or STX

See Titan Dot Matrix document for examples of strings

Local Installation Cross Over cable

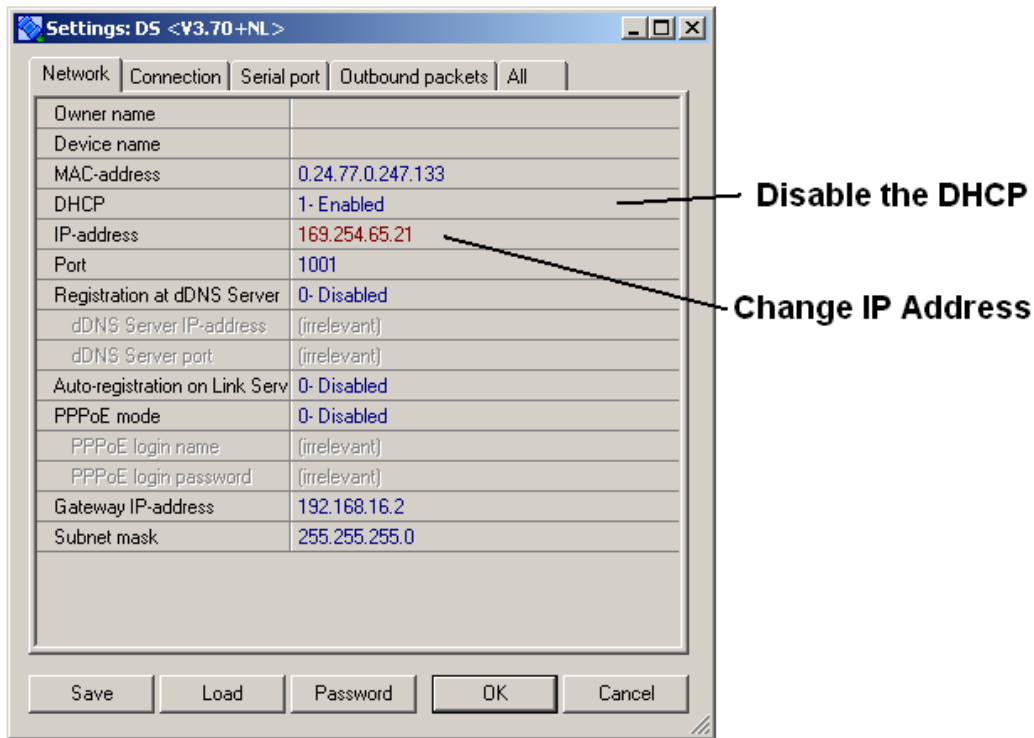
- Connect the Crossover cable to the Ethernet module.
- Launch DS Manager
- Wait a few seconds
- Click Refresh

You should see this screen:



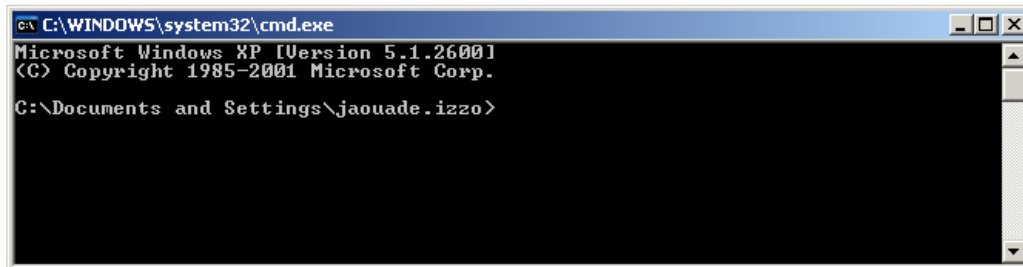
If not, press Refresh again.

- Go to the settings

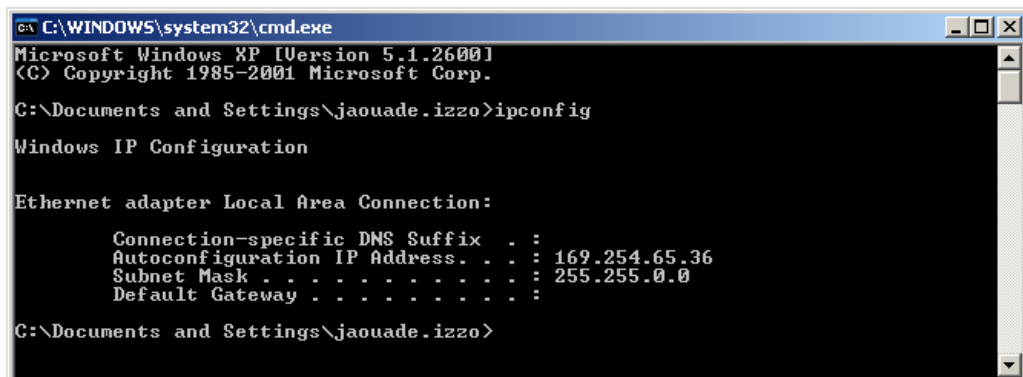


In windows launch the CMD command

→ Run → CMD:



→ write "ipconfig" and press enter:



The IP Address that you gave to the ETHERNET Module must match the subnet mask of the IP Address of your computer.

For example:

* IP Address computer:

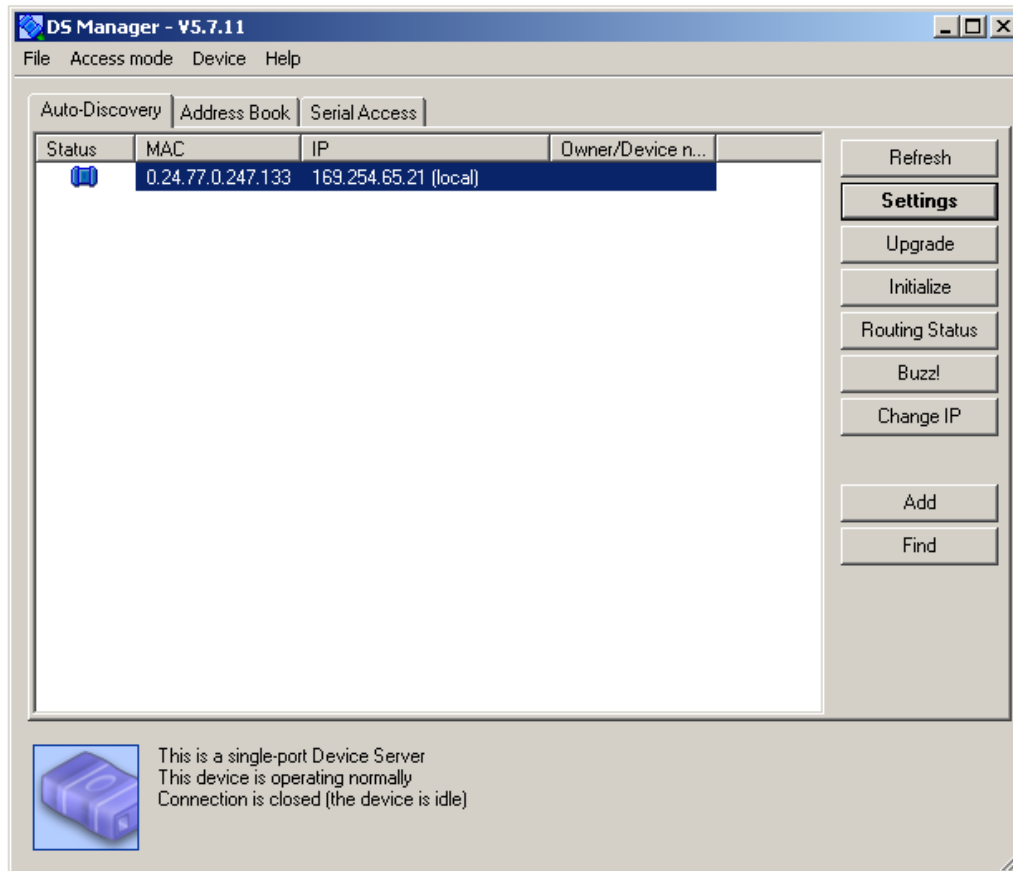
→ 169.254.65.36

* IP Address Ethernet module:

→ 169.254.65.21

As you can see the IP address of the Ethernet module can be understood by your computer.

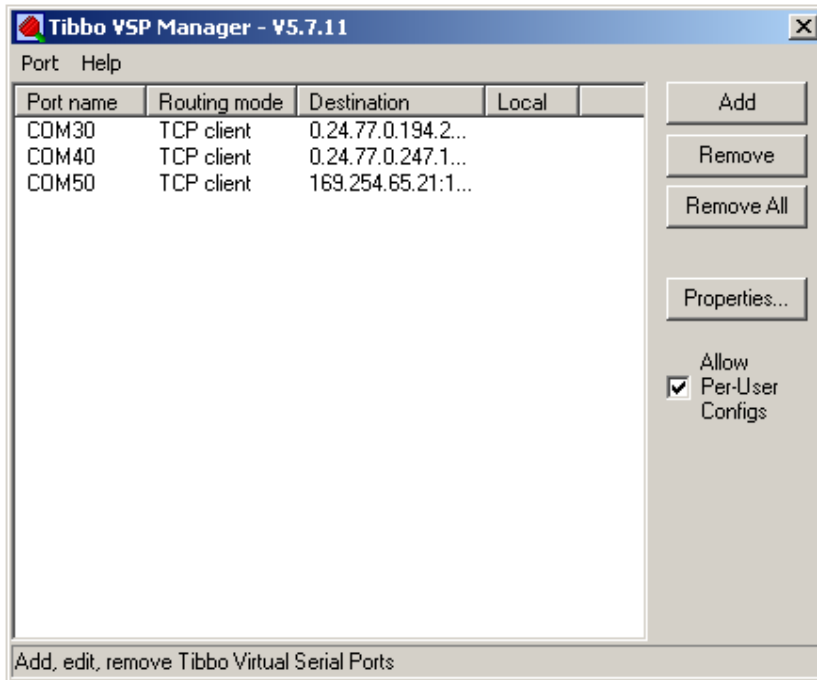
If you go back to DS manager, you should have this screen:



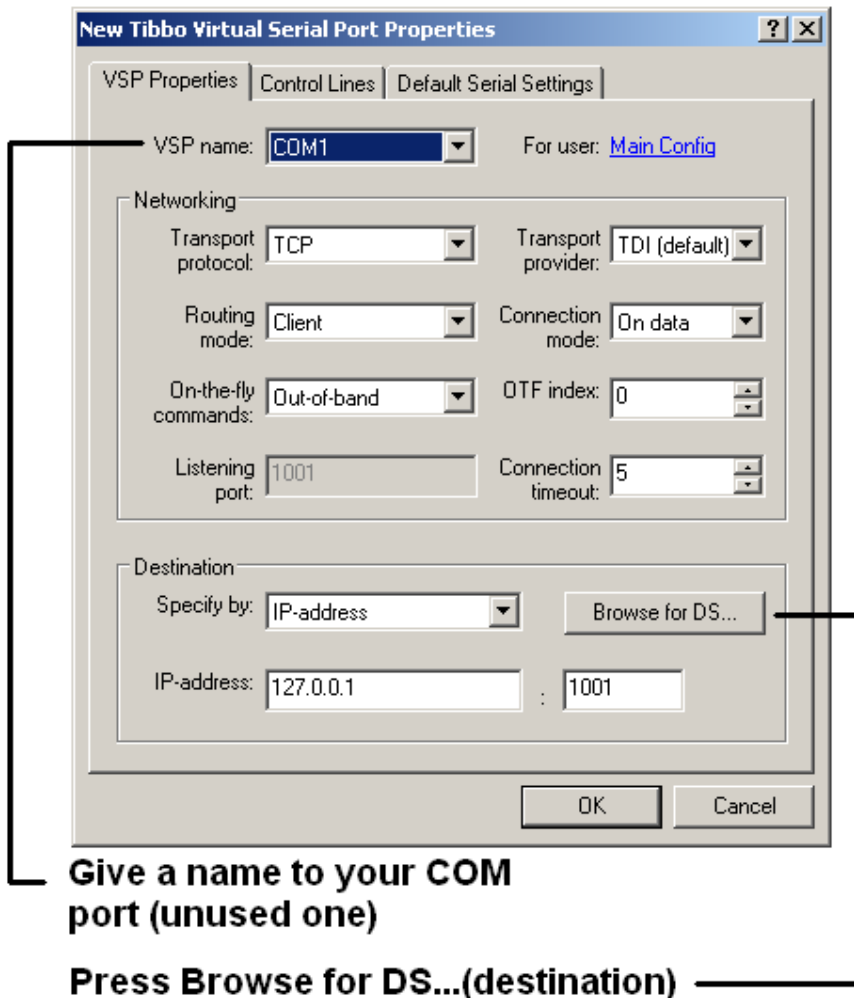
The "Status" will be in Blue and "local" in brackets.

Now you can create a Virtual COM port

→ Launch VSP Manager



Press Add to create a new COM port



- Select a COM, for example COM20
- Press Browse for DS
- Select the Device wanted by double clicking on the IP Address

Go on the Default Serial Settings

Select a baud rate matching the one selected on the Settings of DS Manager.

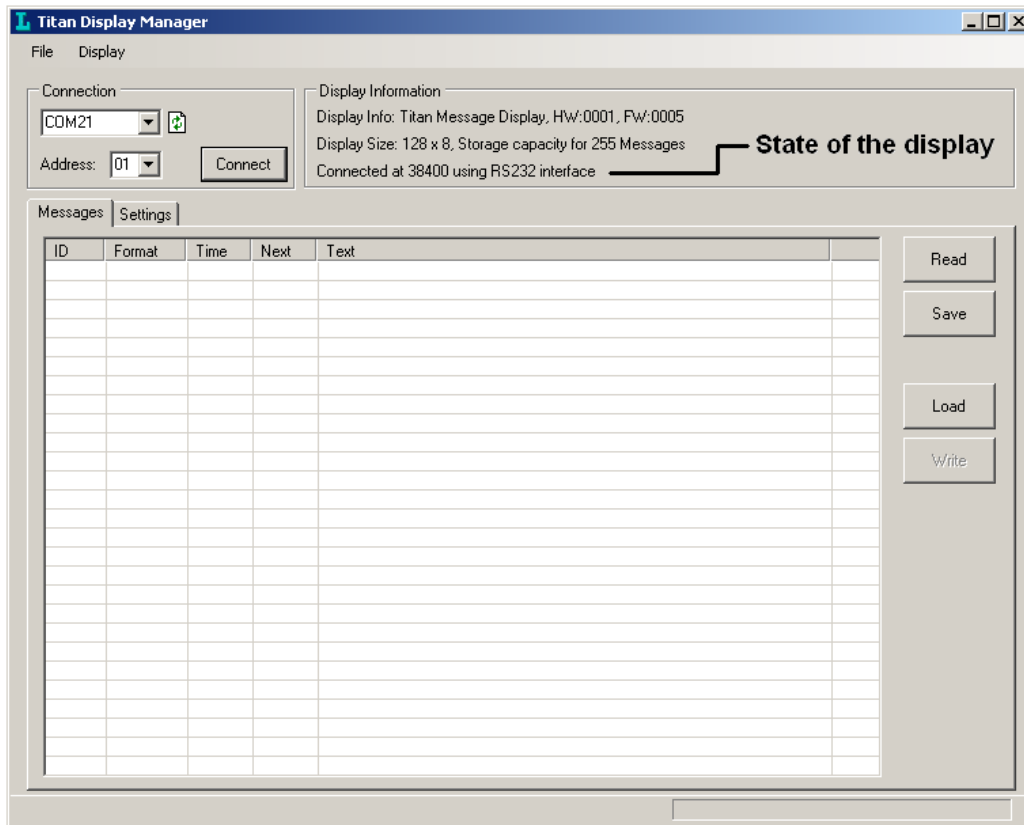
Press OK.

You can use TITAN Manager or any Software that can send ASCII data such as RealTerm, a free application available for download at:

<http://www.london-electronics.com/terminal.php>

See *Send Active strings using RealTerm (page 7)*

Connection

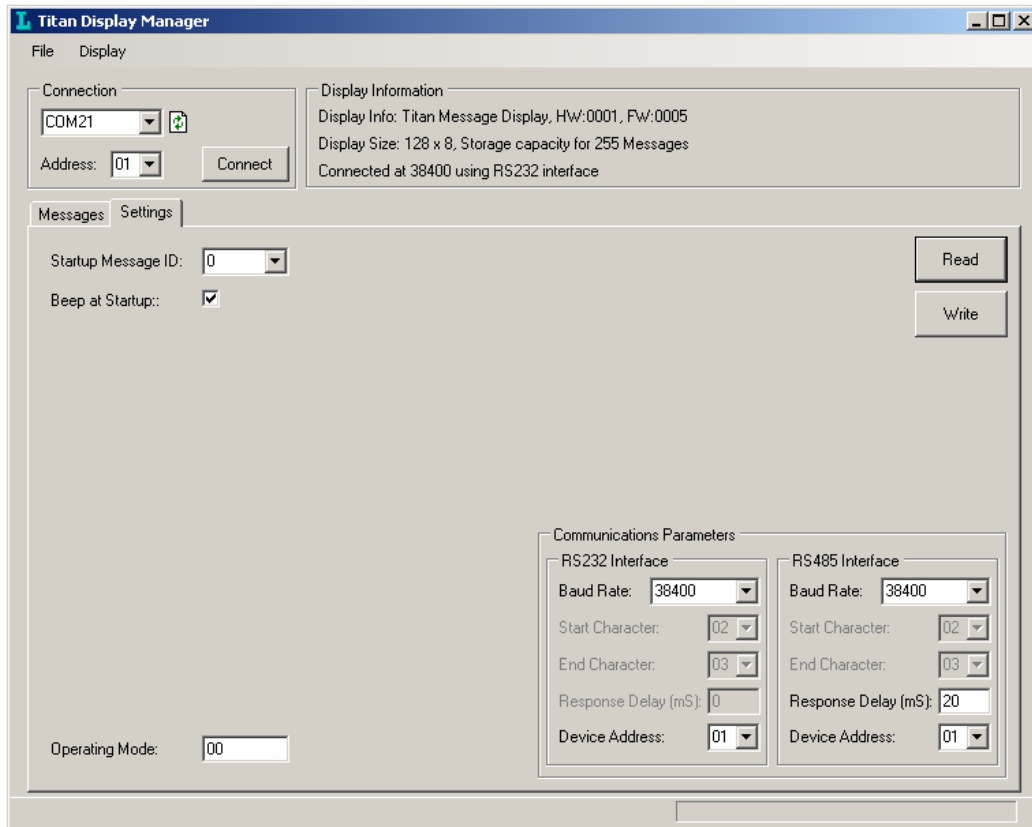


In **Display Information** you should see the display connected and additional info.

Press:

- **Read** to read and edit the current messages
- **Save** to save all the messages
- **Load** to load messages previously saved
- top tab **Display** and Select **Clear ALL messages in Display** to erase them all

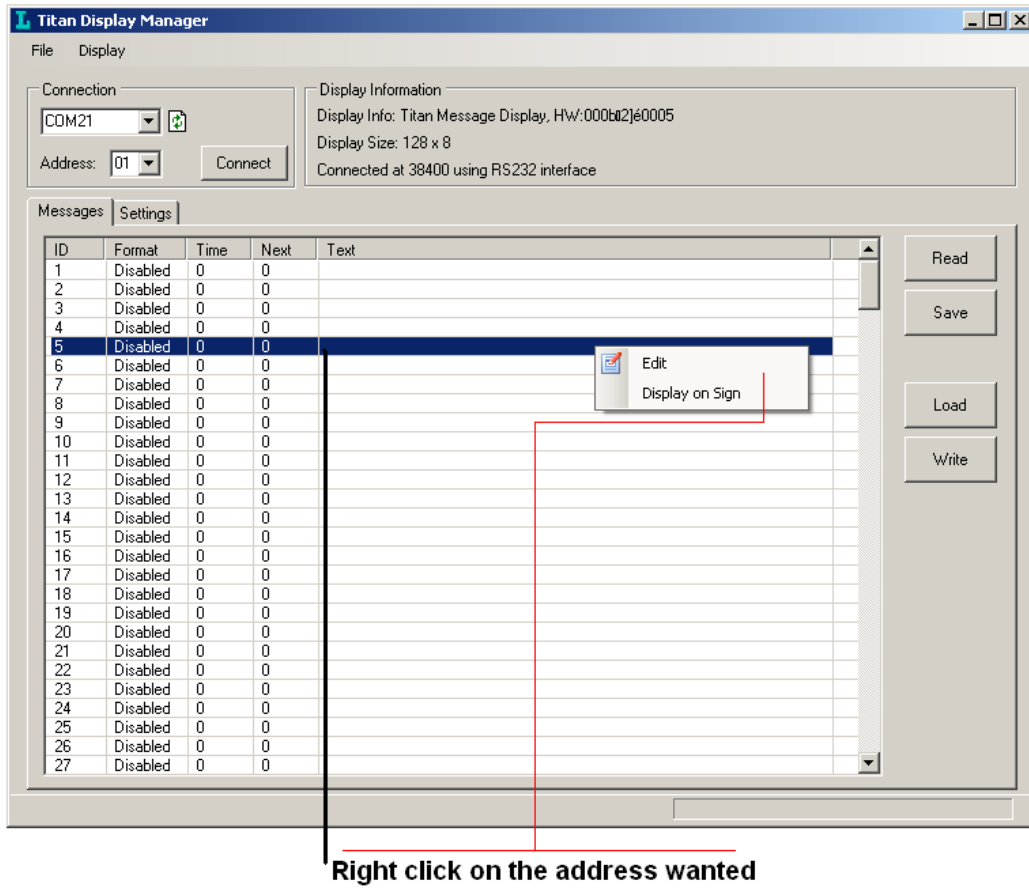
Settings



You have access to a few options in *Settings* tab

Press **Read** to see the current settings, you can choose the startup message or messages by selecting the *Startup Message ID*.

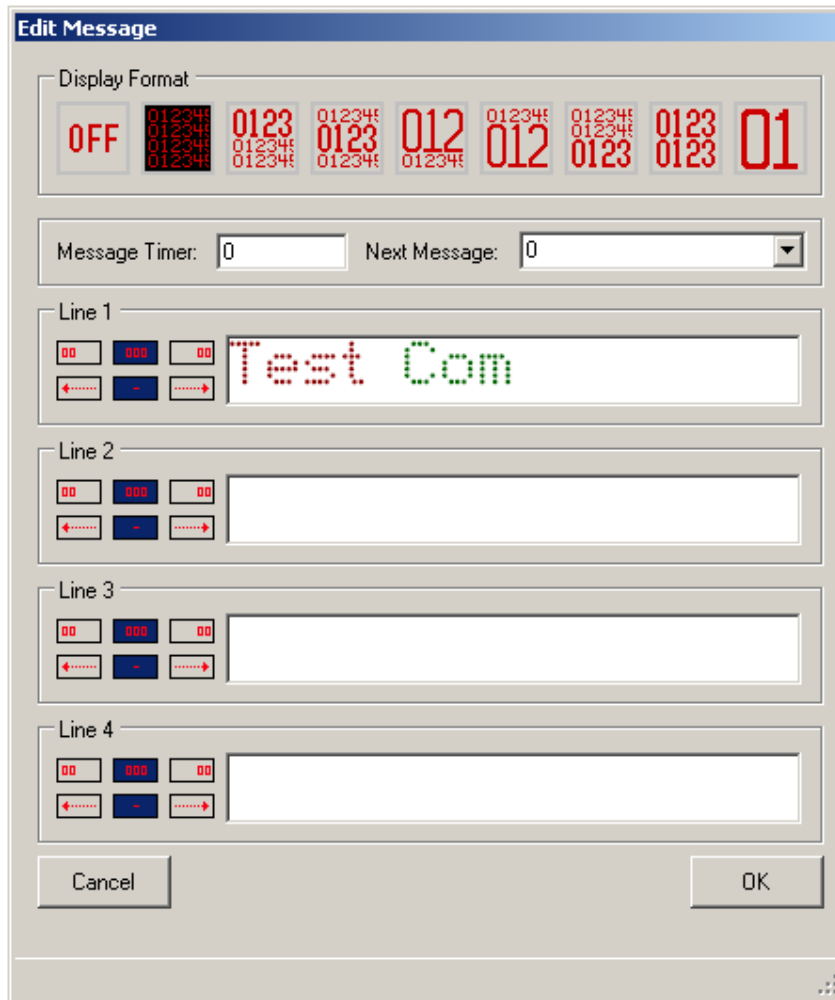
Edit messages



Select *Edit*

See following page

Edit a message



- Select the format wanted according to the specification of your display
Size / colour / 1 line / 2 line
- Select a Message timer if wanted
If selected the message will be displayed for the desired time
- Select next message to display from the one that you are editing
- Write your message
 ➔ Test Com

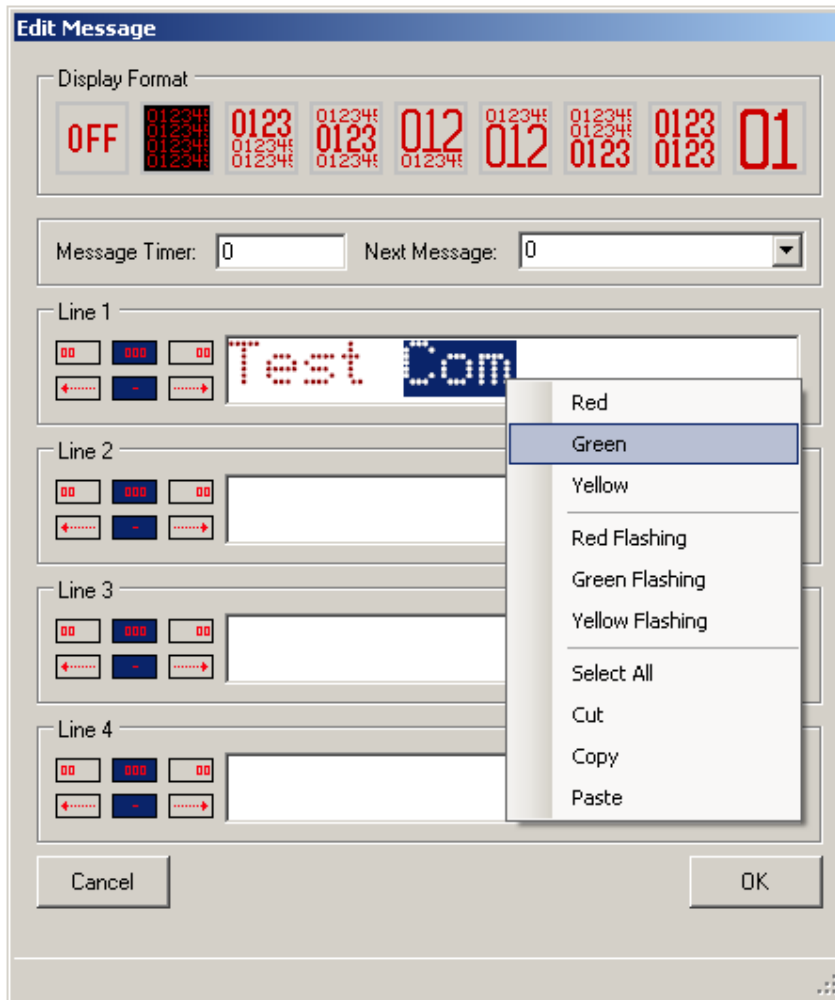
You can select the colour by highlight the text and right click on it, and also the flashing mode.

In this case:

Test will be displayed in RED and ***Com*** will be displayed in GREEN

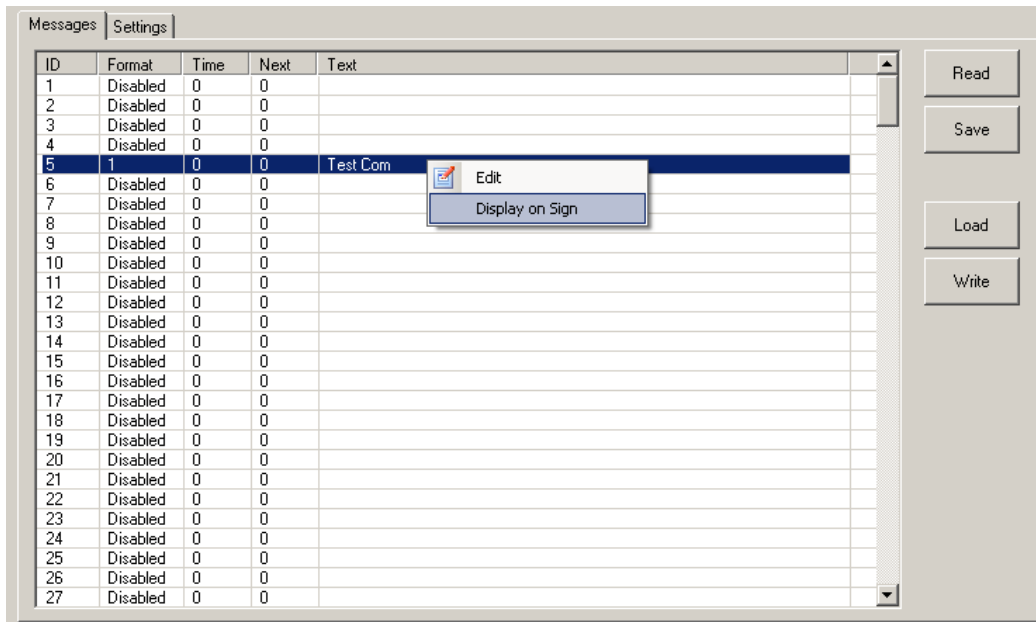
See following page

Colour and flashing



These modes are also available using RealTerm, see *Titan Dot MatrixDisplay* document.

Display on Sign



Allow you to display directly the message to the sign from Titan Manager.

Titan firmware version:

Titan_0005